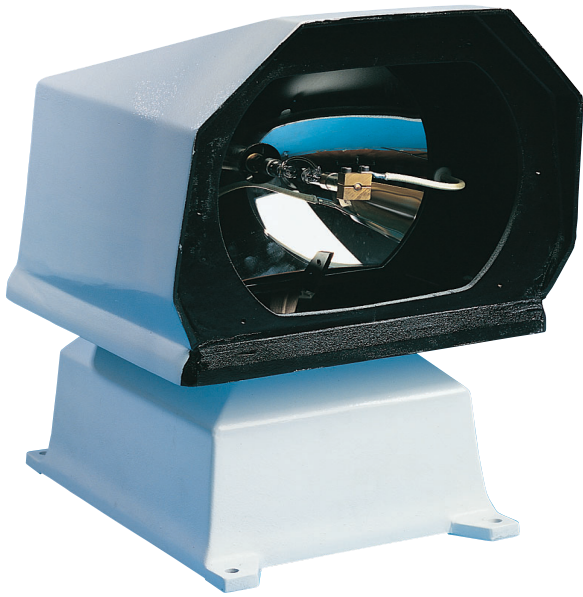


# Xenon Searchlight

**NORSE**light



## XR 500 R20 Remote controlled

### Applications

The clean compact design and low weight of the XR 500 R20 suits high speed vessels, tug boats, pilot vessels and luxury yachts.

Through a unique color distribution, the Xenon lamp rapidly detects ice and illuminates surface objects. Its beam range is 4 times that of a Halogen light.

Built with corrosion-resistant components, the searchlights are designed for extreme marine environments and require minimum maintenance.

Lightweight and simple to mount, these searchlights provide reliable lighting in all kinds of temperatures.

For power supply unit and panels, see separate brochures.

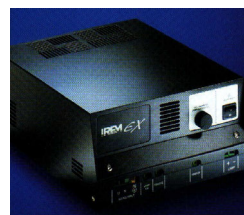
### Features

- Designed to meet applicable marine requirements IP56
- Light weight and compact
- Applicable to sub-zero temperatures of -50°C (-58°F)
- Thermostatic control for continuous performance and lighting efficiency
- Remote controlled wide or narrow beam operation
- Stepless adjustable 322 degrees horizontal and 55 degrees vertical movement
- Position indicators
- Seawater-resistant, aluminium housing finished in white Corrocoat polyester
- Durable silver-plated glass reflector
- Electromagnetic compatibility (EMC)



Reference photo

### Accessories



Power supply



Main panel

### Options



Pedestal




Slave panel



# Technical data

**NORSElight**

XR 500 R20

Technical data Search light	Voltage (Volt)	Power (Watt)	Divergence	Range *(m)	Covered area Ø (m)	Luminous intensity (cd)	Intensity at 250 m (lux)	PAN-sector	Tilt-sector	PAN-speed	Tilt-speed	Weight** (Kg)	
				at 1 lux								R20	R20H
XR 500 R20	115/230	500	2 - 7°	4000	140	20 x 10 <sup>6</sup>	256	± 161°		5-36° / s	5-36° / s	26,5 kg	35,5 kg

\*Theoretical estimated range  
\*\*Excl. power supply

