

Halogen Searchlight

NORSElight



SH 200 D
SH 200 BS
SH 200 BH

Features

- Designed to meet applicable marine requirements IP67
- Adjustable beam
- Stainless steel front ring with snap coupling for rapid replacement of lamp
- Seawater-resistant aluminium housing finished in white Corrocoat polyester
- Hardened front glass
- Durable silver-plated glass reflector specially designed for halogen bulbs




Applications

The Halogen searchlights SH 200 D, SH 200 BS and SH 200 BH are intended for smaller tonnage, e.g. fishing boats, tugs and work boats.

Built with corrosion-resistant components, the searchlights are designed for extreme marine environments and require minimum maintenance.

Lightweight and simple to mount, these searchlights provide reliable lighting in all kinds of temperatures.

The following versions are available:

D	BS	BH
Direct operated	Bridge Short	Bridge High
		



NM 012E-A(05.03)

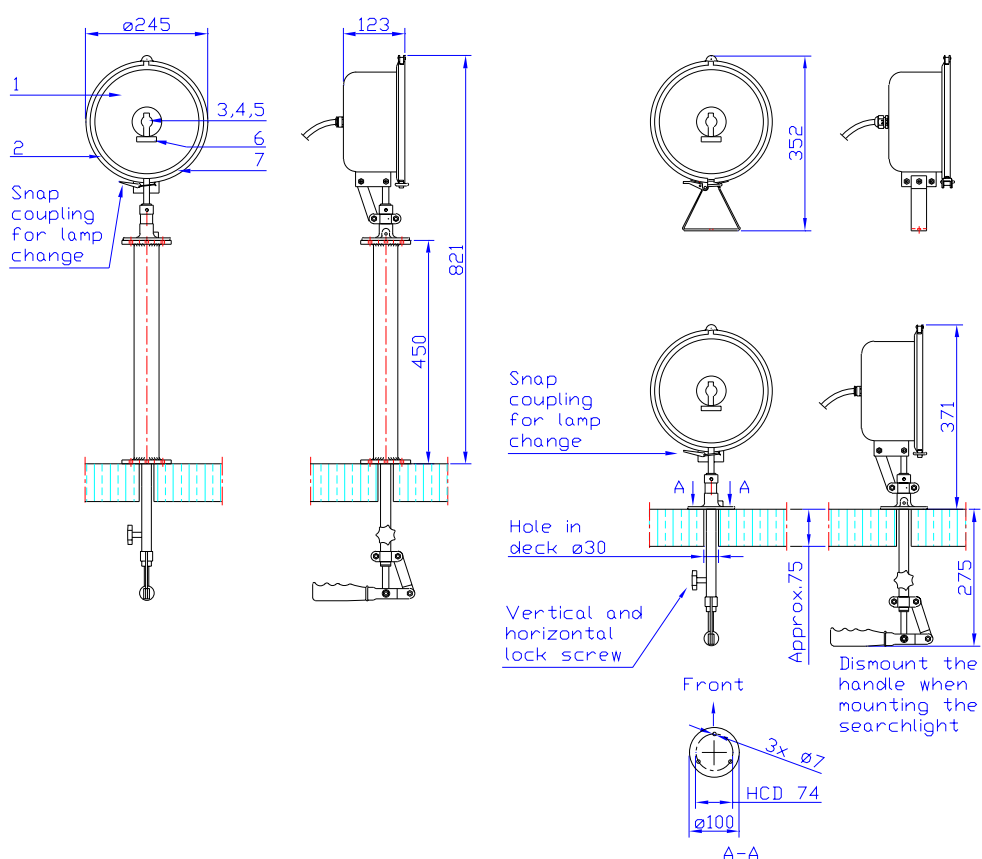
Technical data

SH 200 D
SH 200 BS
SH 200 BH

Type	Voltage (Volt)	Power (Watt)	Range ** (m)	Covered area Ø (m)	Lamp lifetime* (h)
			at 1 lux		
SH 200 D/BS/BH	12	100	540	125	2000
SH 200 D/BS/BH	24	100	540	125	2000
SH 200 D/BS/BH	24	250	900	150	2000

*Accordance to manufacturers specifications

**Theoretical estimated range



Type	Weight (kg)
SH 200 B	2,5
SH 200 BH	4
SH 200 D	7,1